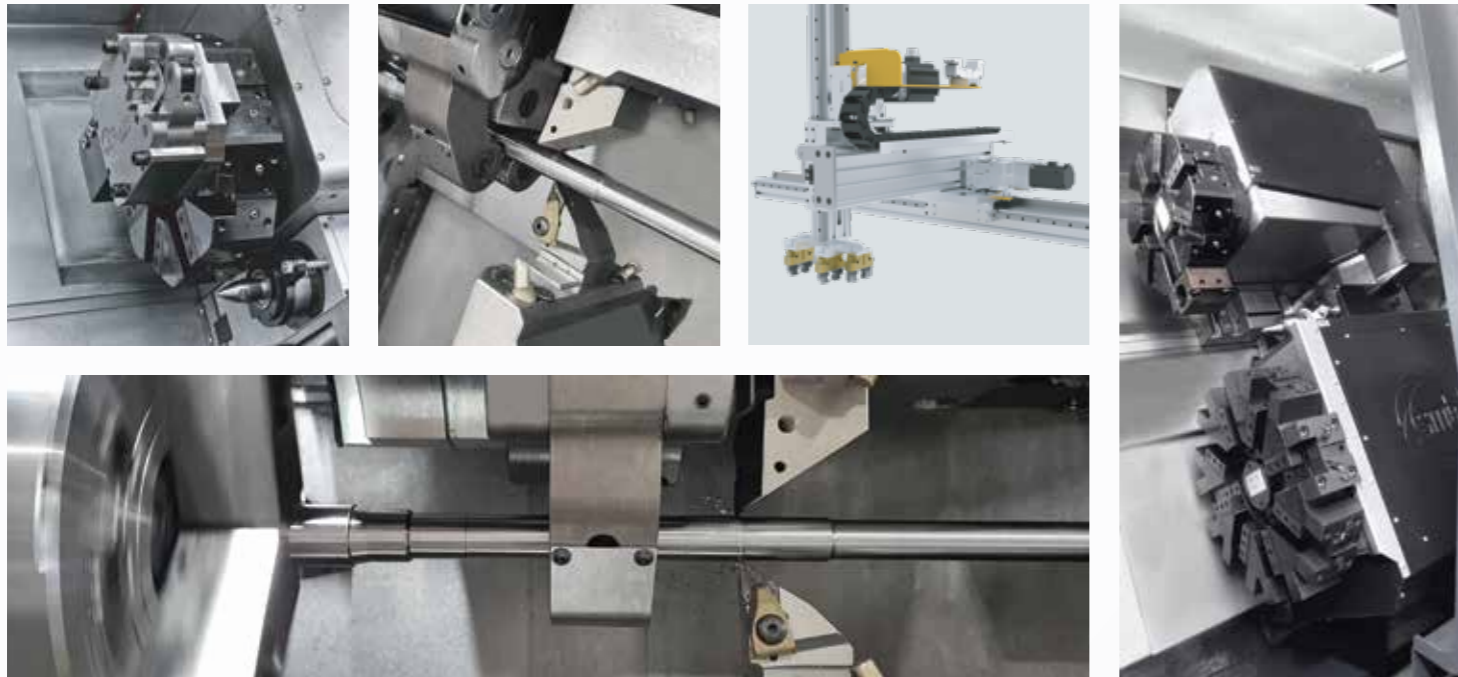




# HIGH PRODUCTIVE CNC TURNING MACHINES

## 850 SERIES



### Technical Specifications

		ST-850 / TT-850		ST-850 C / TT-850 C	
<b>Capacity</b>					
Swing Diameter	mm	Ø500		Ø500	
Max. Turning Diameter	mm	Ø200		Ø200	
Max. Turning Length	mm	1000		1000	
Bar Capacity	mm	Ø52		Ø52	
<b>Spindle</b>					
Chuck	inch	8/8 (Incl. Subspindle)		8/8 (Incl. Subspindle)	
Max. Speed	rev/min	4500		4500	
Spindle Nose		A2-6		A2-6	
Spindle Hole	mm	Ø65		Ø65	
Spindle Power	KW	12/12 (Incl. Subspindle)		12/12 (Incl. Subspindle)	
<b>Turret</b>					
Turret Quantity		1	2	1	2
Tool Stations		8	8 x 2	12	12 x 2
Positioning Time	sec	0,3		0,15	
Tool Disc Type		Slotted		BMT-55	
Driven Tool Power/Torque	KW/Nm	-		2,2/14	
Max. Driven Tool Speed	rpm	-		10000	
<b>Machine Dimensions</b>					
Machine Area	mm	4850 x 2610 x 2330		4850 x 2610 x 2330	
Loader Area	mm	1480 x 1470 x 4200		1480 x 1470 x 4200	
Weight	kg	9500	10000	10000	10000

### DESIGN

NC Control **Lunette**.

NC Control **Tailstock**.

Single & Twin Turret on same **Machine Bed**.

Ready for integration of **Gantry Loader**.

### MACHINING CAPACITY

**Dedicated** to Thin & Long Part.

1000 mm Turning Length including **Chuck**.

12 KW Spindle Power.

### GANTRY LOADER

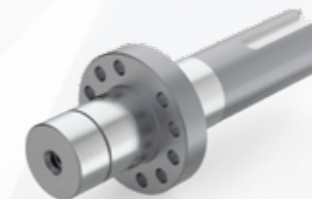
Including 3 axis driven by **Servo Motors**.

Particular applications for **Long Workpieces**.

**Less Footprint** thanks to Top Mounting.



TRANSMISSION SHAFT

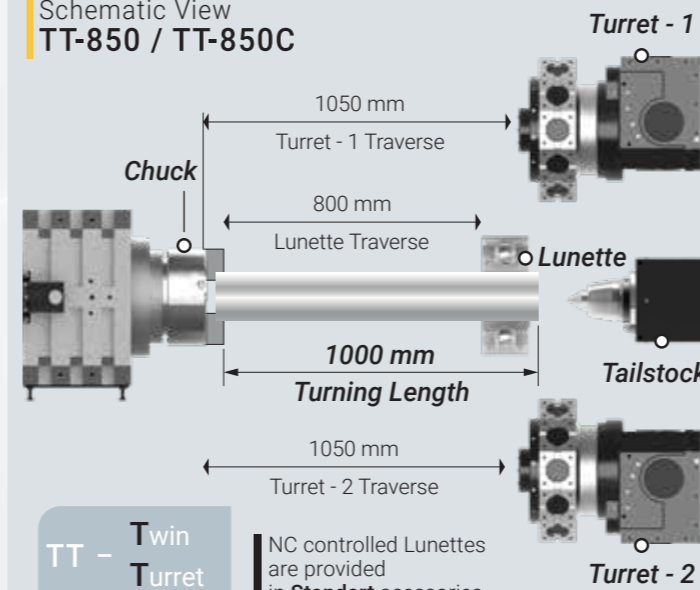


AXLE



CAM SHAFT

### Schematic View TT-850 / TT-850C



### Schematic View ST-850 / ST-850C

